

■ **PRODUCT WATCH:** Noise Reduction

■ **ATTACHMENT BUYER'S GUIDE**

# Civil Infrastructure

July 2005

*Promoting Development, Planning and Maintenance*

[www.cimagazine.net](http://www.cimagazine.net)



**2005  
Attachments  
Directory**

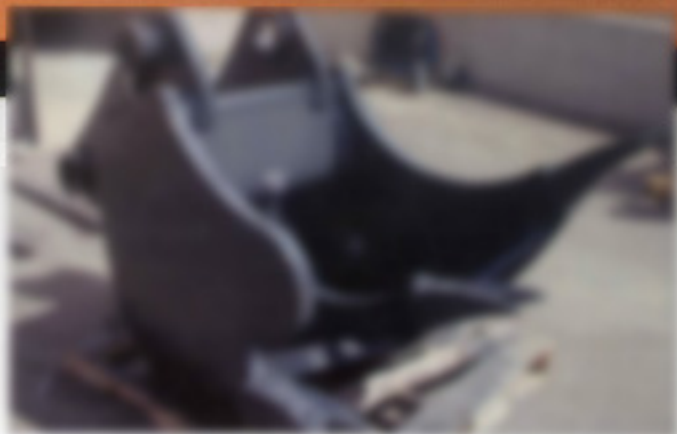
## Attachments - PB Series Pile Breakers

The PB Series of Pile Breakers is a unique product for quick removal of the exposed concrete portion of foundation piles without damaging the reinforcing steel rod. The pile breaker consists of modules that can be added to or removed from to cut a wide range of pile sizes, starting from a minimum of 100mm up to 400mm for round sections, and from 100mm up to 400mm for square sections.



The PB Series is available in a full and precise range of sizes, improving productivity by as well as increasing the strength of steel reinforcements, which are all fully damaged when using other methods of removal. Replacement tips are available in 2 lengths, to suit the pile size and density of reinforcing steel. They can be used with a variety of carriers including hydraulic excavators, cranes and straddle cranes.

**Breaker Technology, Inc.**  
 10000 W. 10th Street, Suite 1000  
 Denver, CO 80202



## Loading Edge Attachments Introduce a Multi-Ripper Bucket

Designed to handle the front-end rock removal jobs, Loading Edge Attachments, Inc. introduces the performance-improving "Multi-Ripper" (shown as an "MR" "Multi-Ripper" Bucket). The Multi-Ripper Bucket is constructed with tough 4000 steel and available in 10 sizes, ranging from 1.5 to 11.5 cu. yd. It uses the bucket's cutting action to rip. The ripper teeth have features that reduce the resistance to penetration. The Multi-Ripper Bucket accepts all material that has been rippled so that there is little ground material left in the trench. The bucket is wider than the 4000 in. the ripper.

**Loading Edge Attachments**  
 10000 W. 10th Street, Suite 1000  
 Denver, CO 80202

## MT Series Multi-Tool

Available in 11 sizes, the Allied-Gator MT Series Multi-Tool uses their unique Power-Link and Guide System to provide a steady increase in power and control over the tool as it closes. From the fully enclosed hydraulic cylinder to the unique, disposable wear components, the MT Series Multi-Tool is designed to require less maintenance at a lower cost than any other processor, and to be easier and faster to service in the field. The modular design allows pin-on jaw sets to be switched out and the tool to be reconfigured in minutes from Shear to Cracker/Crusher for maximum versatility—without the hassle of hydraulic hose removal. Cutting-edge, proprietary features such as Allied-Gator Speed-Circuit Technology, centerline cycling, with 360 degree rotation deliver faster cycle times, provide pinpoint accuracy, and eliminate clumsy material positioning and operator blind spots.



**Allied-Gator**  
 CIRCLE 27 ON READER SERVICE CARD

## Allied-Gator

CIRCLE 26 ON READER SERVICE CARD



## Claw Bucket Increases Performance Capabilities

Allied-Gator's Claw Bucket increases the performance capabilities of any OEM loader bucket adding superior functionality for material handling, sorting, and compaction. The Claw Bucket is more than strong enough to withstand the tractive force of the machine; once the Claw is clamped shut, it cannot be pried open. From the fully enclosed hydraulic cylinders to the high quality materials and construction, the Allied-Gator Claw Bucket is designed to work harder and last longer than any other bucket closure system. Allied-Gator's proprietary two-pin installation and removal system makes it quick and easy to switch between a standard bucket configuration and the Claw Bucket configuration on the job site.